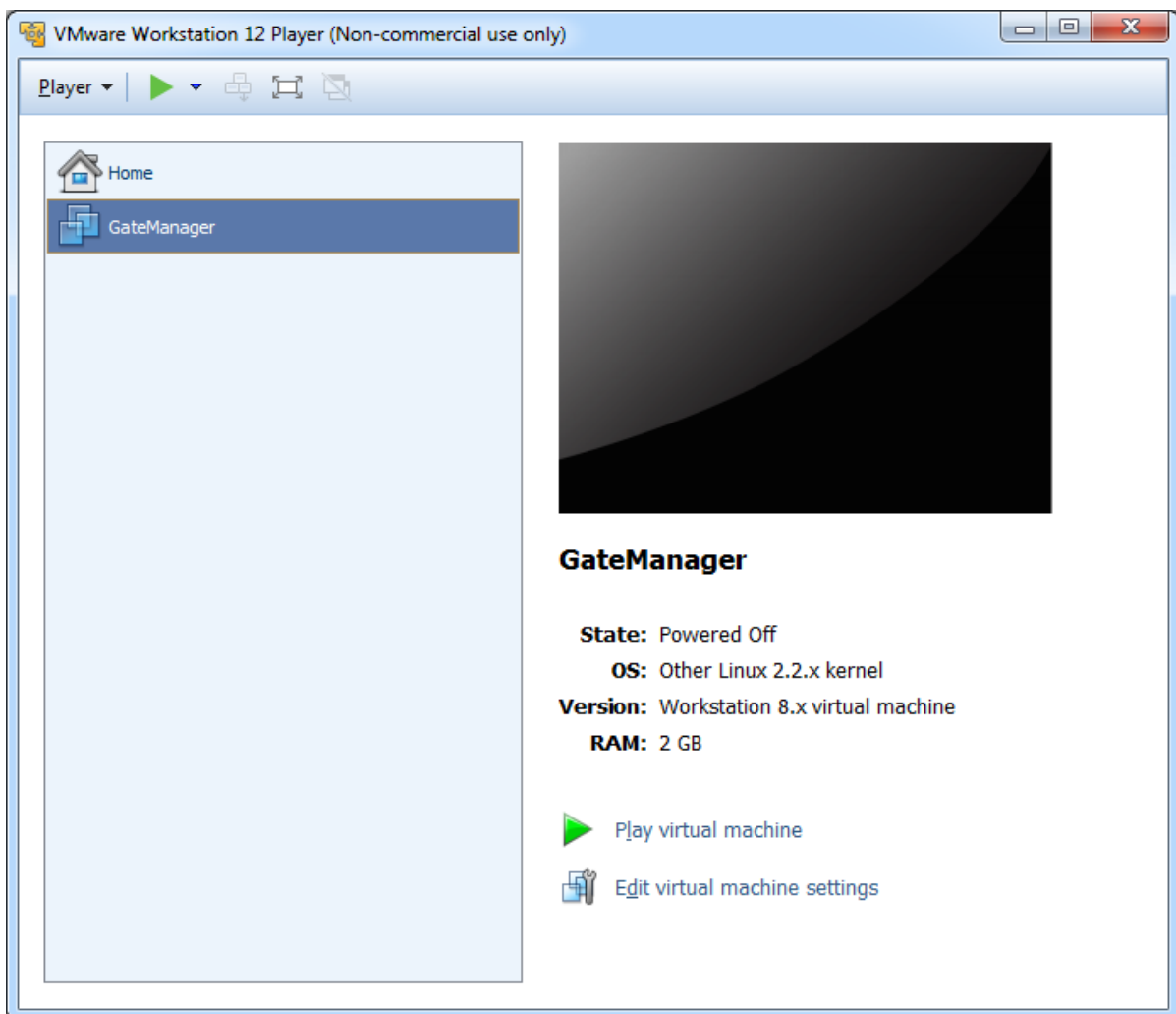


Self-Hosted GateManager

The example describes the necessary steps to install and configure a „Self-Hosted GateManager“ on a “VMware Player”.

- 1.) Download the “Self-Hosted GateManager Administrator Package” from the URL:
<https://www.sra.hirschmann.com/>.
- 2.) Unzip the package. You need only the file “GateManager.ova”.
- 3.) Install or open the “VMWare Player” on your Host.
- 4.) After loading the file, you should get the following screen



- 5.) Start the VM and follow the instructions.
- 6.) The following commands are available

```

GateManager - VMware Workstation 12 Player (Non-commercial use only)
Player | || | | |
Pass 2: Checking directory structure
Pass 3: Checking directory connectivity
Pass 4: Checking reference counts
Pass 5: Checking group summary information
/dev/boot: 14/9984 files (0.0% non-contiguous), 334/9969 blocks

Please press Enter to activate this console. e1000: eth0 NIC Link is Up 1000 Mbps Full Duplex, Flow Control: None
random: tgdrandom read with 27 bits of entropy available
e1000: eth0 NIC Link is Up 1000 Mbps Full Duplex, Flow Control: None

>help
Unknown command.

The following commands are available:

config          Setup default configuration
recover         Install recover admin account
factoryreset    Reset the configuration to factory default
reboot          Reboot the appliance
status          Show system status
ping            Ping a target

>random: nonblocking pool is initialized

```

7.) Type in “config” and setup an IP-Address, Subnetmask and a Gateway for this server.

```

GateManager - VMware Workstation 12 Player (Non-commercial use only)
Player | || | | |
config          Setup default configuration
recover         Install recover admin account
factoryreset    Reset the configuration to factory default
reboot          Reboot the appliance
status          Show system status
ping            Ping a target

>random: nonblocking pool is initialized

The following commands are available:

config          Setup default configuration
recover         Install recover admin account
factoryreset    Reset the configuration to factory default
reboot          Reboot the appliance
status          Show system status
ping            Ping a target

>config

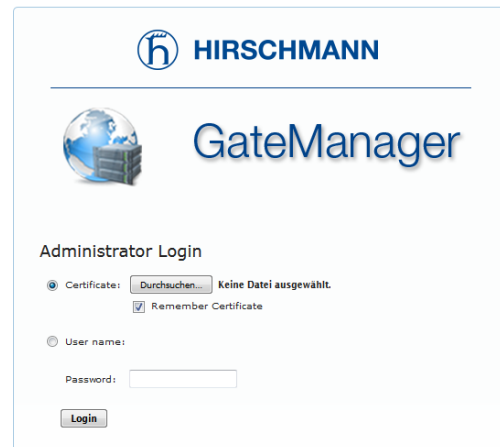
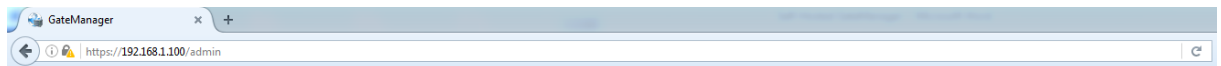
=====
UPLINK PORT STATIC IP SETUP
=====

Enter UPLINK static IP: _

```

8.) Depending on your VMWare-Guest network settings, you can access the configured servers IP-Address from internal and from a remote PC. (Default: bridged adapter)

9.) Start a Browser and type in the following [URL:https://<Server-IP>/admin](https://<Server-IP>/admin) and you will get the following screen.



10.) Login with User name and password

- User name: Administrator
- Password: gatemanager