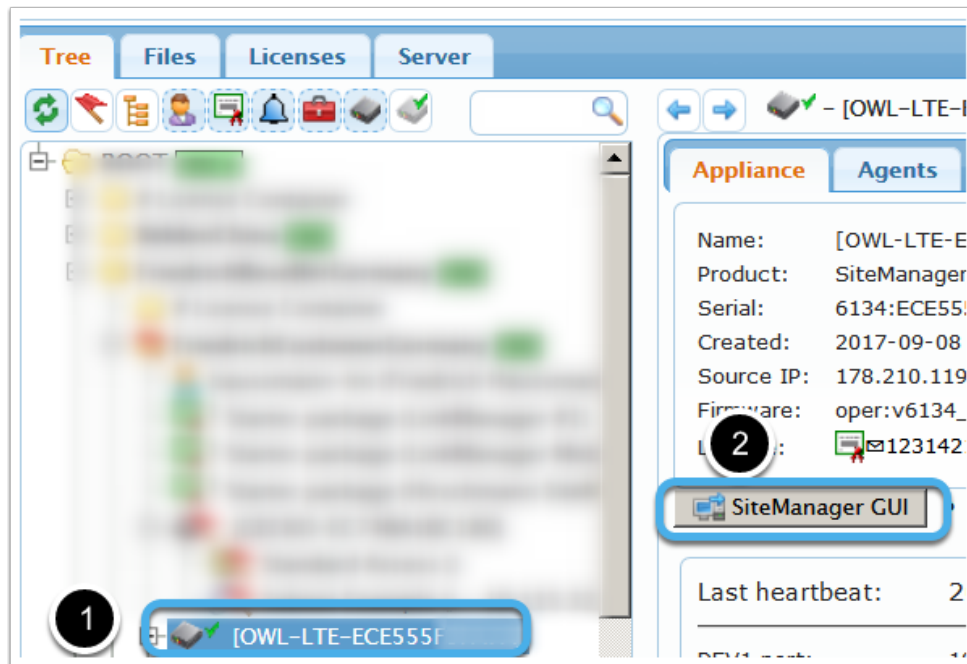


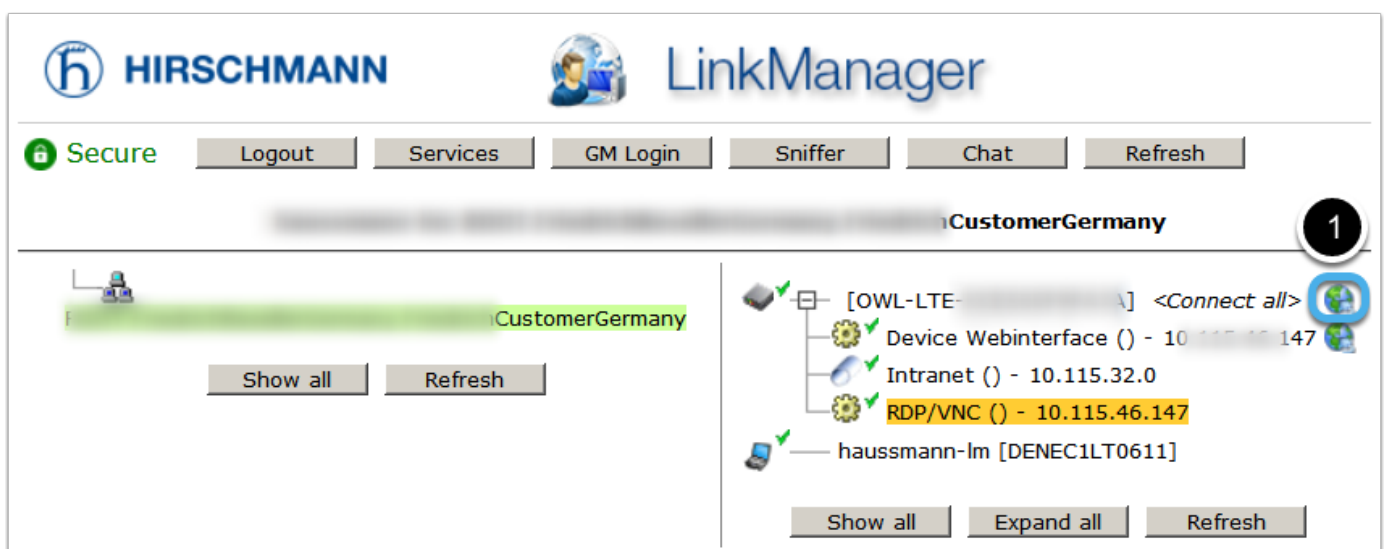
SiteManager Windows for RDP or VNC

This guide explains how to connect to the VNC/RDP server on the same PC as the SiteManager.

1) Open the SiteManager GUI through the GateManager Administrator Interface



1) ... or through the LinkManager



2) Configure the Agent

HIRSCHMANN SiteManager Embedded

SETUP • GateManager Status Log • HELP

GateManager Info • General • Agents • Device Relays • Server Relays • Status

GateManager Agents

Using 3 of 5 extended agents

Device Name	Device Type	Device IP & Parameters	Tunnel
Device Webinterface	GENERIC	Web access (WWW)	PC tcp=22 udp=161 -https PATH=/login.cgi
Intranet	GENERIC	Subnet	10.1 140/19
RDP/VNC	GENERIC	Remote Desktop (VNC)	PC

Refresh Save New

2) Alternative: Combine VNC and RDP

Device IP & Parameters: `PC tcp=+3389,+5900,5800`

HIRSCHMANN SiteManager Embedded

SETUP • GateManager Status Log • HELP

GateManager Info • General • Agents • Device Relays • Server Relays • Status

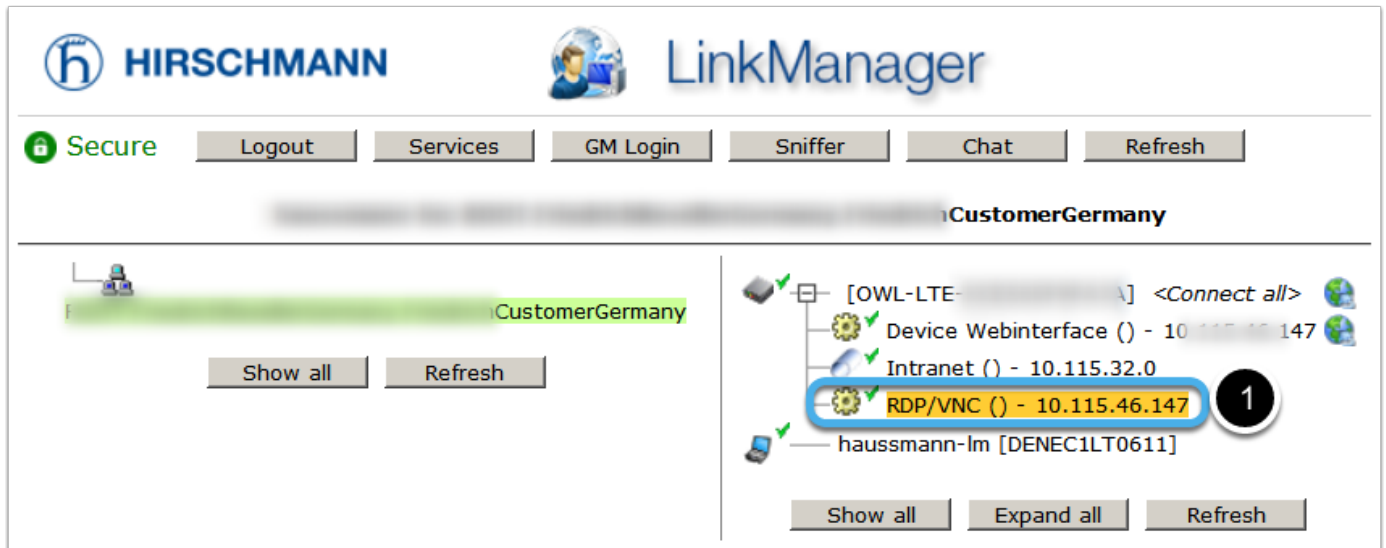
GateManager Agents

Using 3 of 5 extended agents

Device Name	Device Type	Device IP & Parameters
Device Webinterface	GENERIC	Web access (WWW)
Intranet	GENERIC	Subnet
RDP/VNC	GENERIC	Desktop PC

Refresh Save New

3) Connect to the Agent in the LinkManager



HIRSCHMANN LinkManager

Secure Logout Services GM Login Sniffer Chat Refresh

CustomerGermany

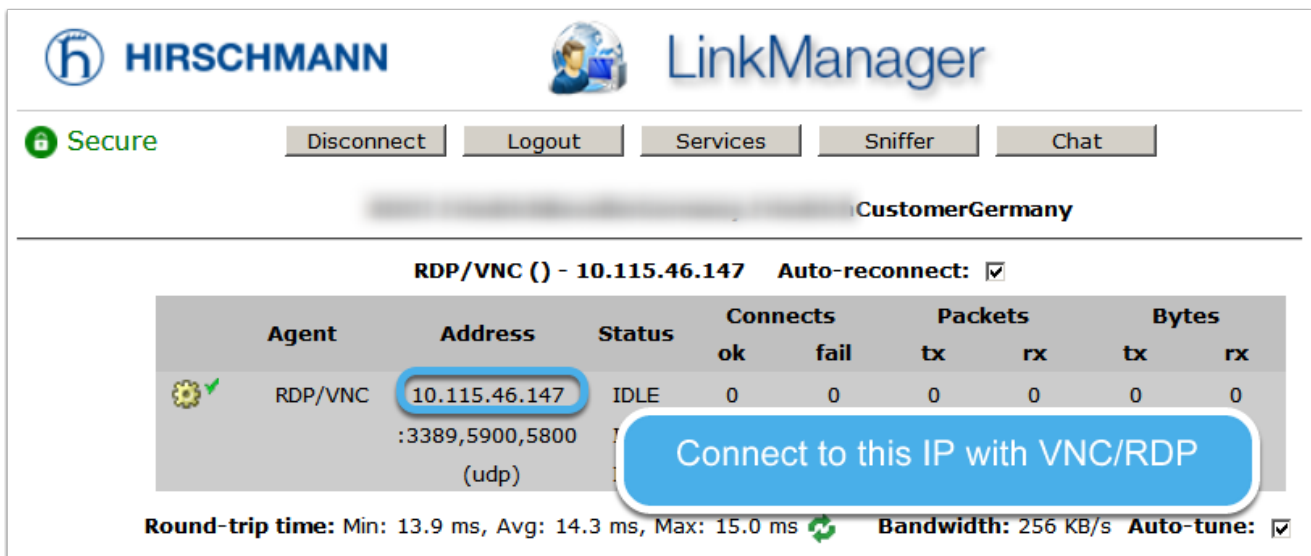
CustomerGermany

Show all Refresh

- [OWL-LTE-...] <Connect all>
- Device Webinterface () - 10.115.46.147
- Intranet () - 10.115.32.0
- RDP/VNC () - 10.115.46.147** **1**
- haussmann-lm [DENECL1T0611]

Show all Expand all Refresh

4) Connection is established




HIRSCHMANN LinkManager


Secure Disconnect Logout Services Sniffer Chat

CustomerGermany

RDP/VNC () - 10.115.46.147 Auto-reconnect:

Agent	Address	Status	Connects		Packets		Bytes	
			ok	fail	tx	rx	tx	rx
 RDP/VNC	10.115.46.147 :3389,5900,5800 (udp)	IDLE	0	0	0	0	0	0

Connect to this IP with VNC/RDP

Round-trip time: Min: 13.9 ms, Avg: 14.3 ms, Max: 15.0 ms  Bandwidth: 256 KB/s Auto-tune:

5) RDP example

