

# Secure Remote Access

## Test Topologies

Mark Cooksley  
Product Manager

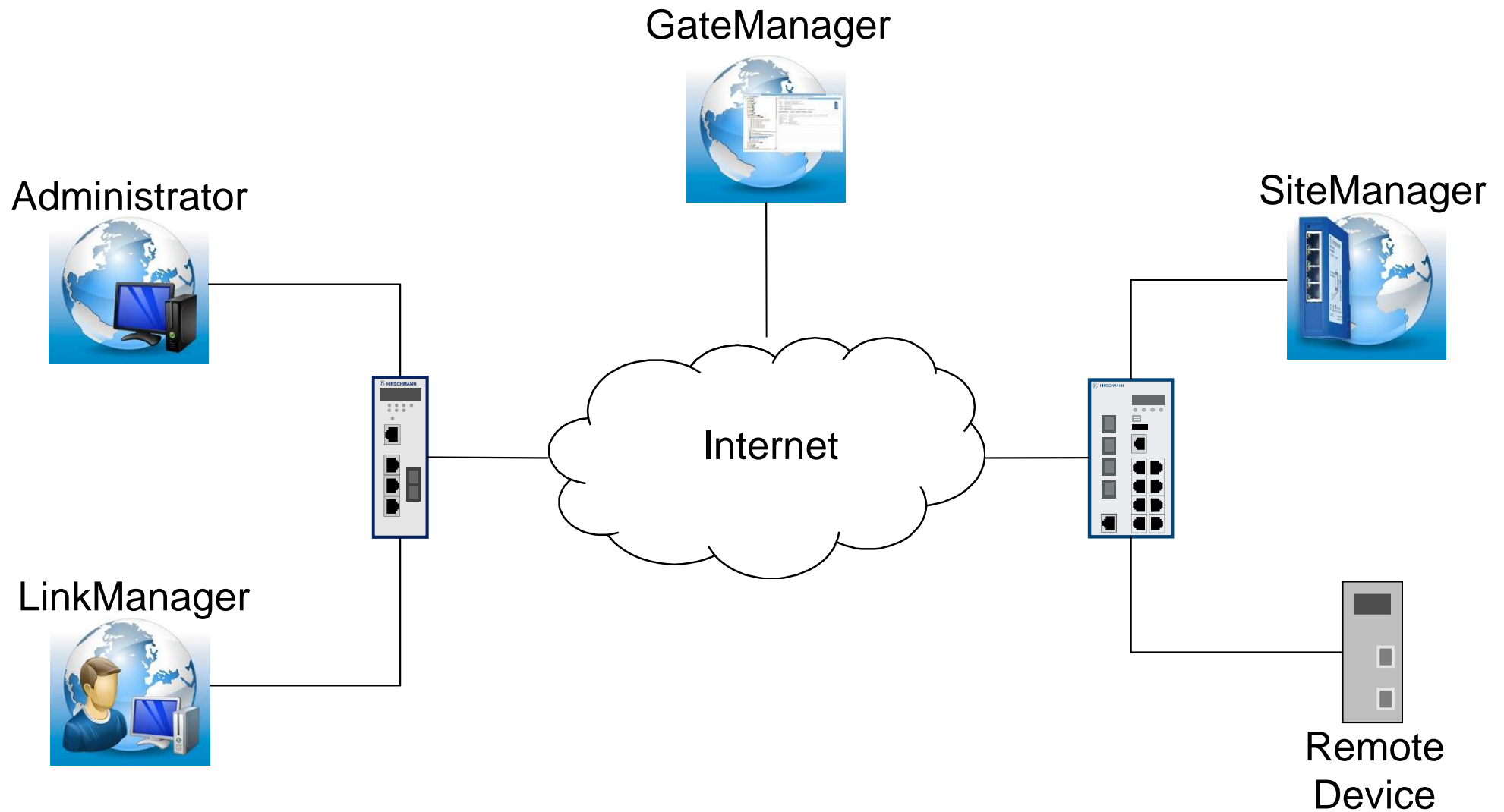
May 2013



# Best Test Topology

- The most realistic test topology requires two separate Internet connections.
- The GateManager Administrator and LinkManager Client will be connected to the Internet via one link.
- The SiteManager and the device to be remotely accessed will be connected to the Internet via the other link.

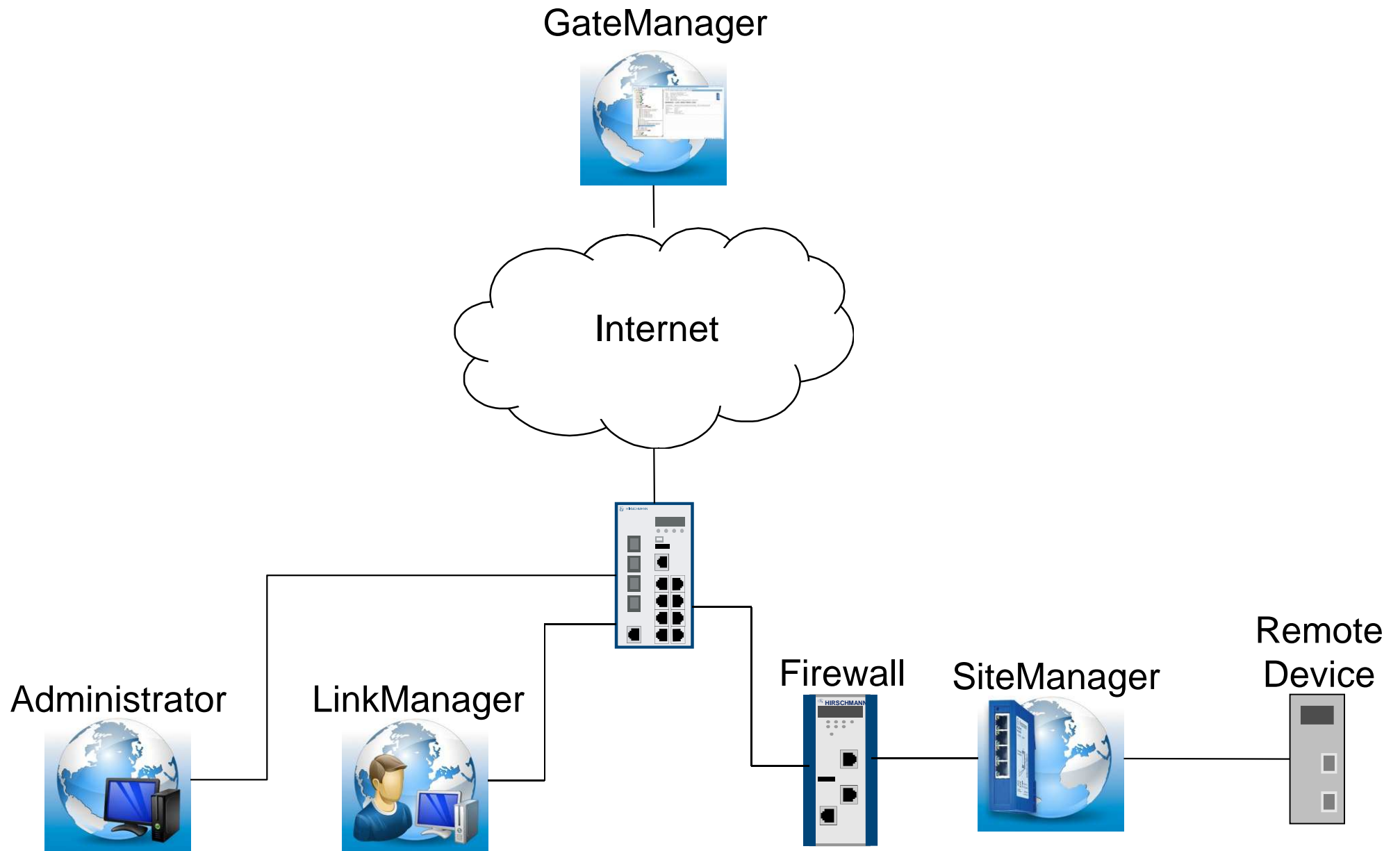
# Best Test Topology



# Better Test Topology

- This topology assumes that you only have one Internet connection available.
- All devices are connected via the same Internet link.
- A firewall is placed between the Internet link and the SiteManager.
- The firewall could be an EAGLE in factory configuration.
- Stateful Inspection will prevent a direct connection between the LinkManager Client and the SiteManager.

# Better Test Topology

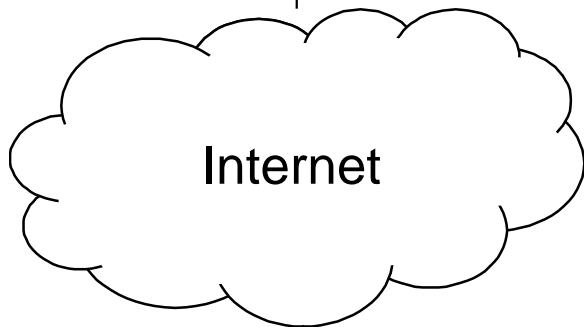


# Good Test Topology

- This topology assumes you do not have a firewall available.
- In this case the application running on the LinkManager Client will be able to access the Remote Device, even when remote access is not enabled.
- When remote access is enabled (LinkManager connected to GateManager) all traffic will be routed via the GateManager, not directly.
- This can be seen by the statistics in the LinkManager.

# Good Test Topology

GateManager



Administrator



LinkManager



SiteManager



Remote Device

